

# HT680 Rugged Handheld Terminal

- HT680 -



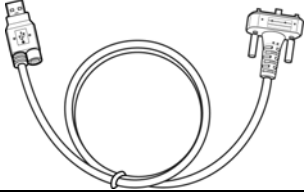
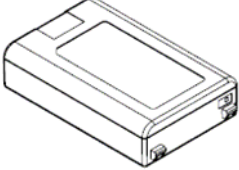
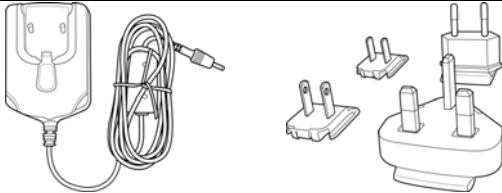
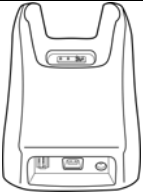


## Quick Reference Guide

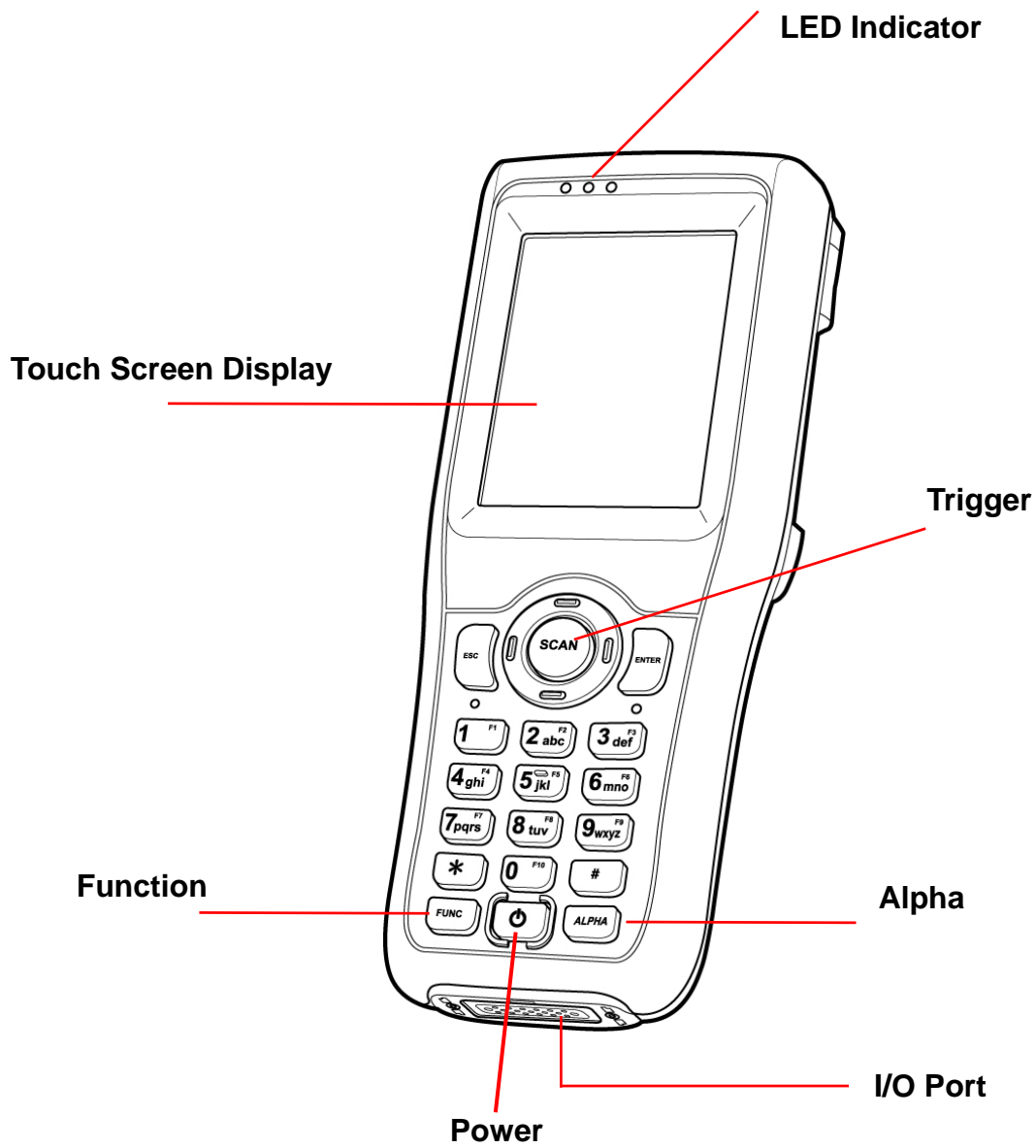
---

400736G Version 1.0

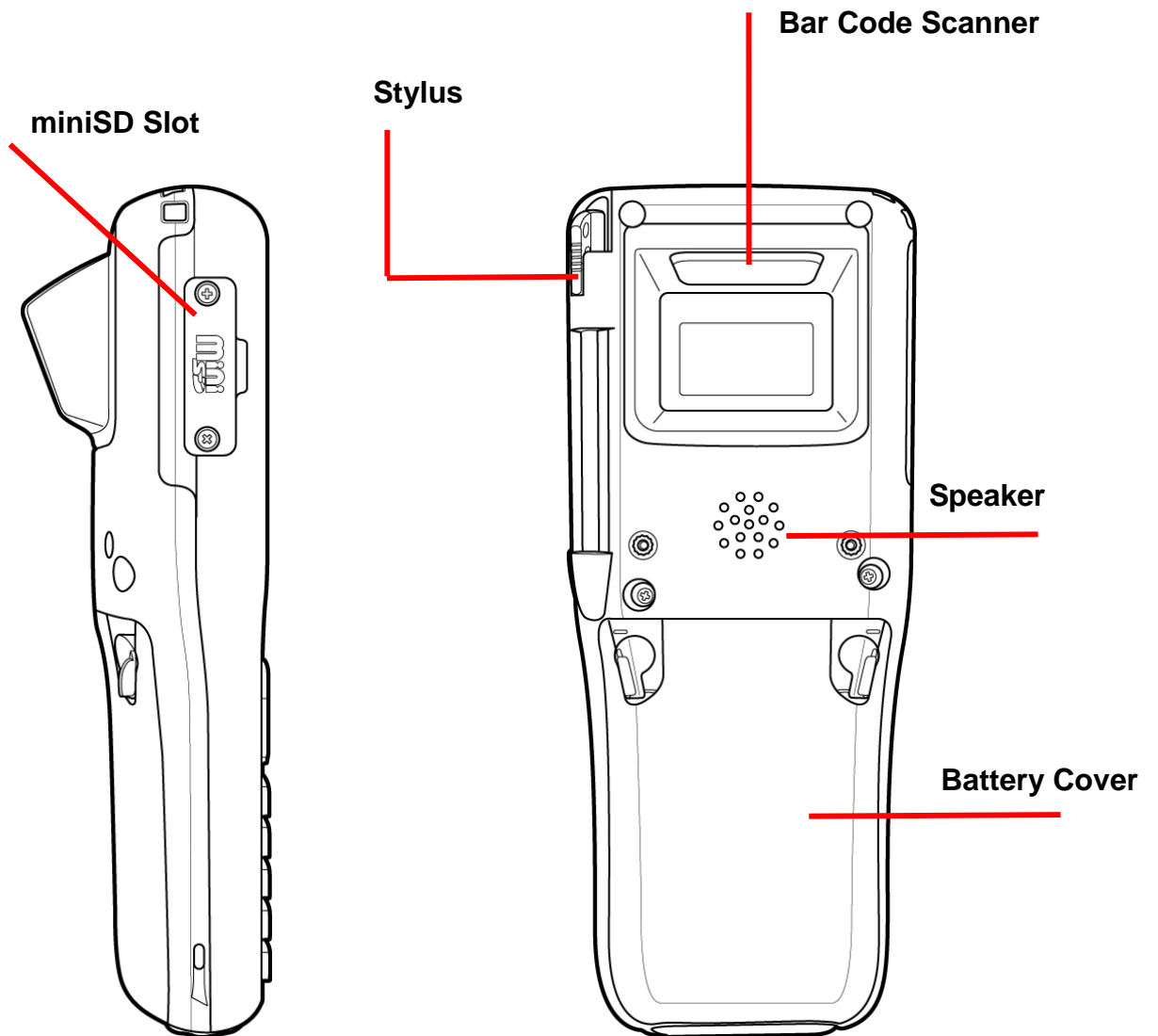
## HT680 Product Introduction & Accessory Kit

	
HT680 Terminal	Manual CD
	
Communication Cable	Battery
	
Adaptor      Plugs	Communication Cradle

## HT680 Front View



## HT680 Rear View



## First Step with HT680

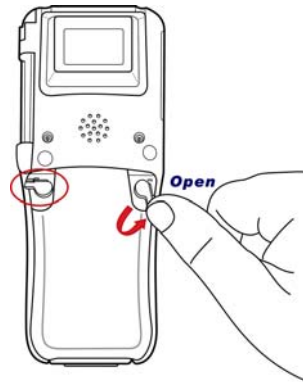
Before first using the HT680, please ensure the battery is fully charged. There are three ways to charge your HT680:

- Docking Station
- USB/Charging cable
- Rechargeable Lithium-Ion battery pack

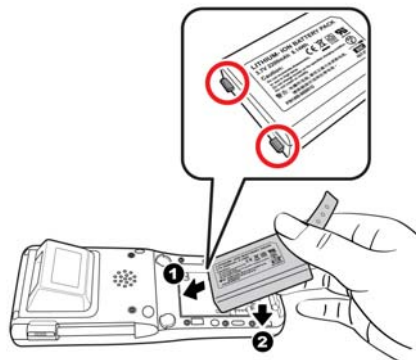
**NOTE:** Data loss may occur if the HT680's backup battery is not adequately charged. Before charging the main battery, make sure the backup battery switch is ON.

## Install the Battery Pack

1. Remove the battery cover.



2. Move the backup battery switch to the ON position (see the description below).
3. Insert the battery pack so that the contacts on the battery pack line up with the contacts in the battery compartment. Fully seat the battery.

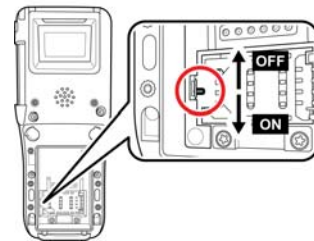


- Cover the battery.



## Switch On Backup Battery

Locate the backup battery switch inside the battery compartment on the left-hand side. Please ensure that it is in the “ON” position before charging the main battery.



## Supply Power to the HT680

Connect the USB/Charging Cable to the HT680 and connect the AC adapter to the cable’s power jack and an electrical outlet.

Or place the HT680 into the Docking Station (first connect the power supply to the Docking Station).

## Charge the Battery for the First Time

We would like to propose to charge the battery at least up to 16 hours for the first time to use. While it normally only takes about 4 hours to charge the battery after it's been drained, when charging the battery for the first time please allow at least 16 hours. While charging the main battery the backup battery should also be charged. Please make sure the backup battery has been switched “ON” (this cannot be emphasized enough).

**CAUTION:** There is a high risk of data loss from RAM if the backup battery is not fully charged. This can happen if the main battery has been drained and the unit is not connected to the AC adaptor. For this reason, it is crucial that the backup battery is switched on before charging the main battery for the first time.

## Keypad

Data can be entered into the HT680 via its keypads, which includes: 0~9, alpha, function, escape, enter, scanner trigger, cursor, and on/off keys.

