

MS860 WiFi Setting

- Step by Step -



MS860
Scanner

MS086
Cradle

A. Main purpose of this technical info.:

The setting procedure in 'MS860 WiFi setting' PPT file is too simple and the procedure in 'MS860 WiFi manual' is too complex. It's not easy for a newbie to operate it smoothly.

B. Devices & Applications

b-1. Scanner: MS860-W8A

b-2. ASUS laptop with Intel(R) PRO/Wireless 3945ABG Network card

b-3. SCM: Scanner Configuration Manager

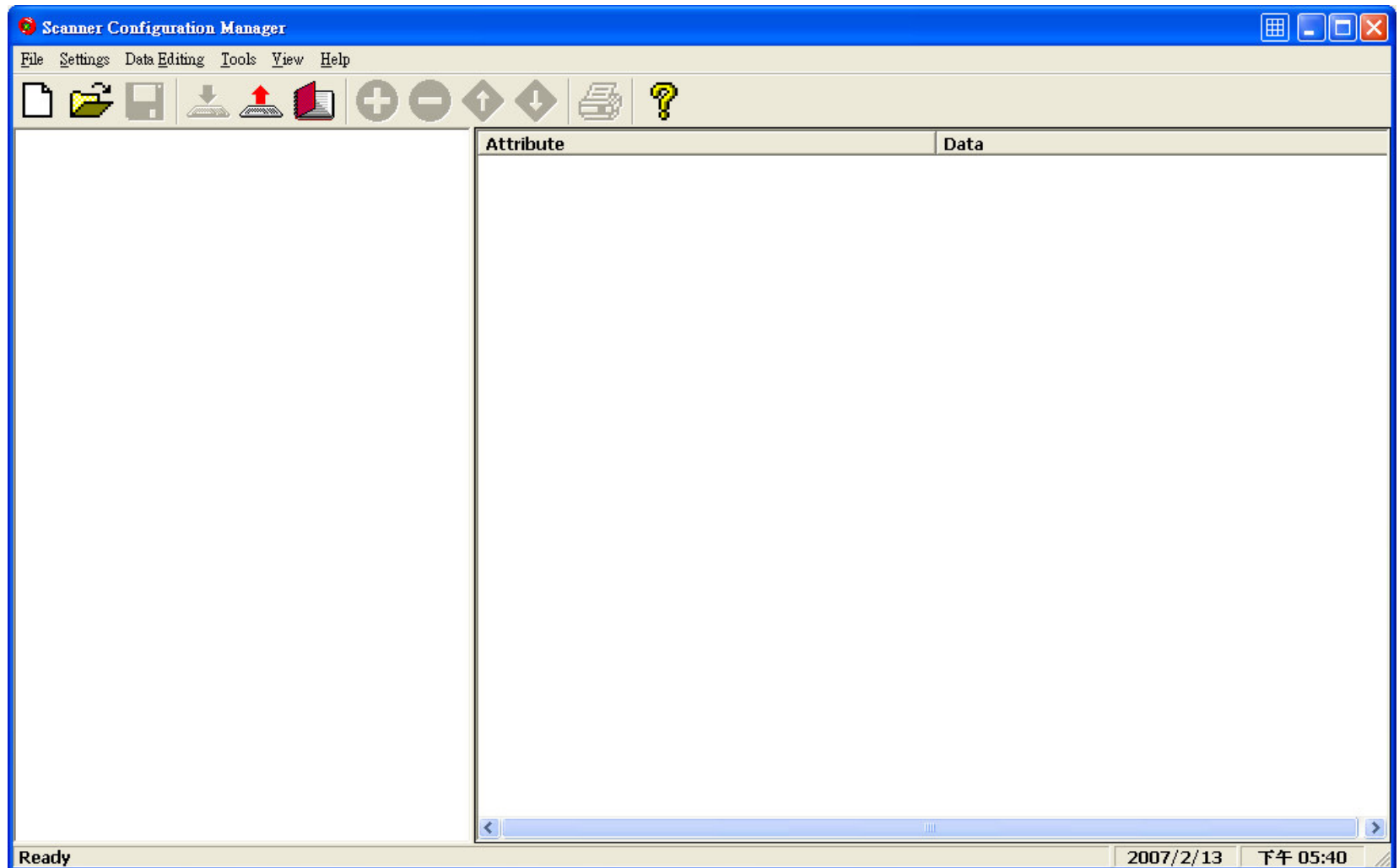
b-4. VCOM: Virtual COM

b-5. HyperTerminal

C.Step by step procedure - SCM

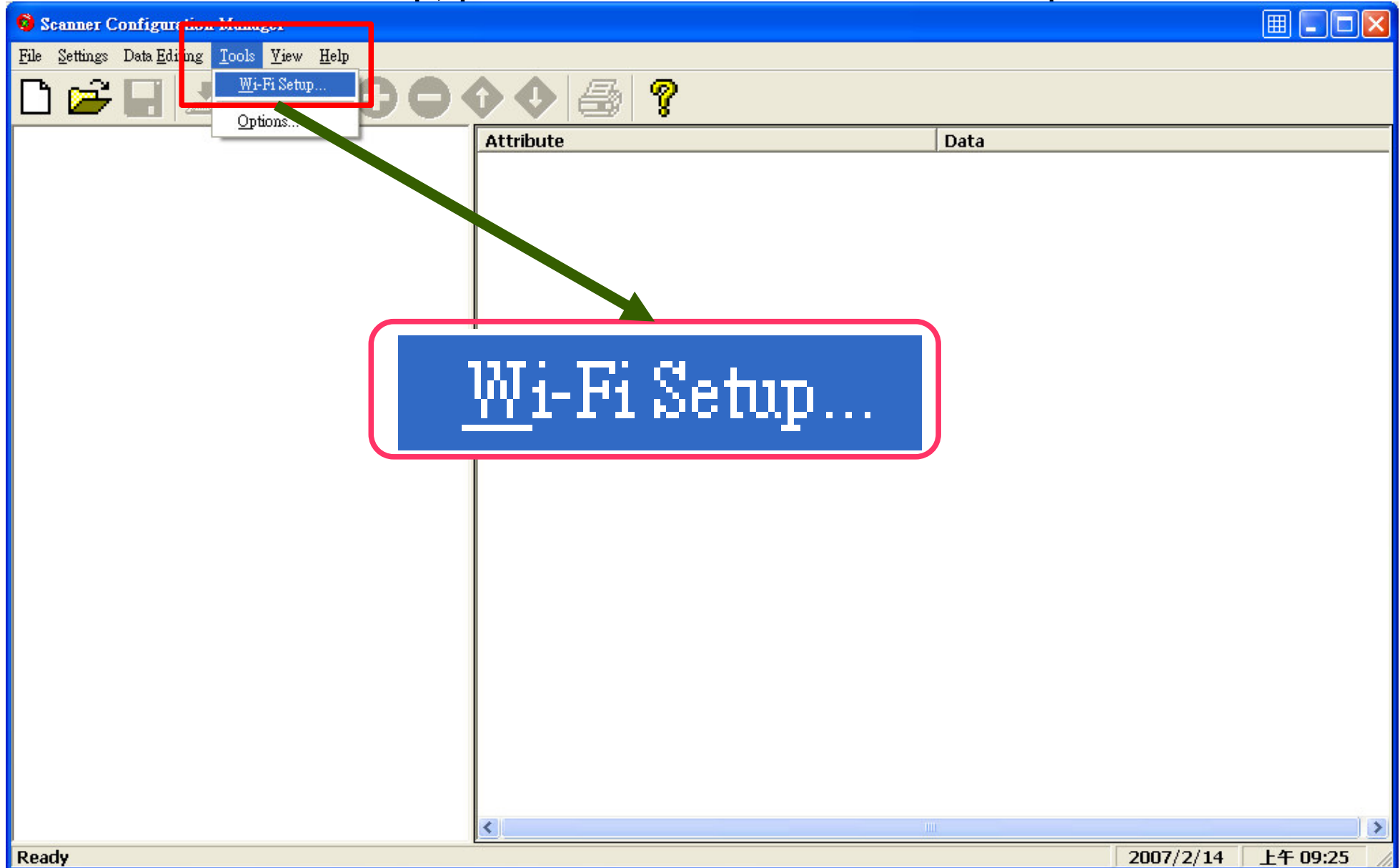
1. Program execution:

After installation, there's a shortcut on your desktop. Double click this icon to execute SCM. Then it will show main screen as below.



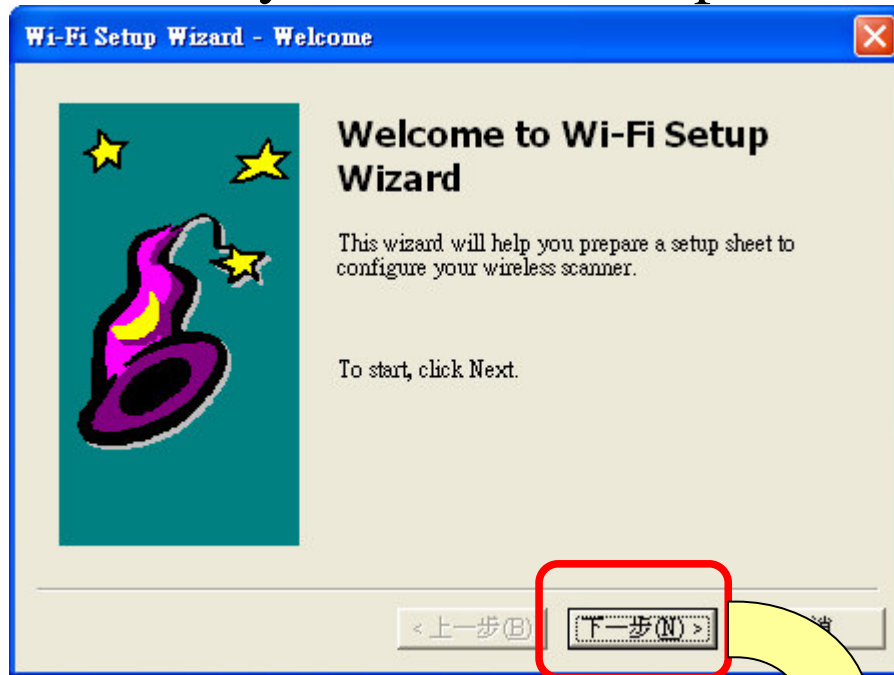
2. WiFi Setup:

For WiFi scanner setup, please click 'Tools -> WiFi Setup'



3. WiFi Wizard Main Screen & SSID setup:

WiFi Wizard pop up on the screen, click 'next' to proceed. Then enter the SSID that you'd like to setup. Ex. SSID is MS860.

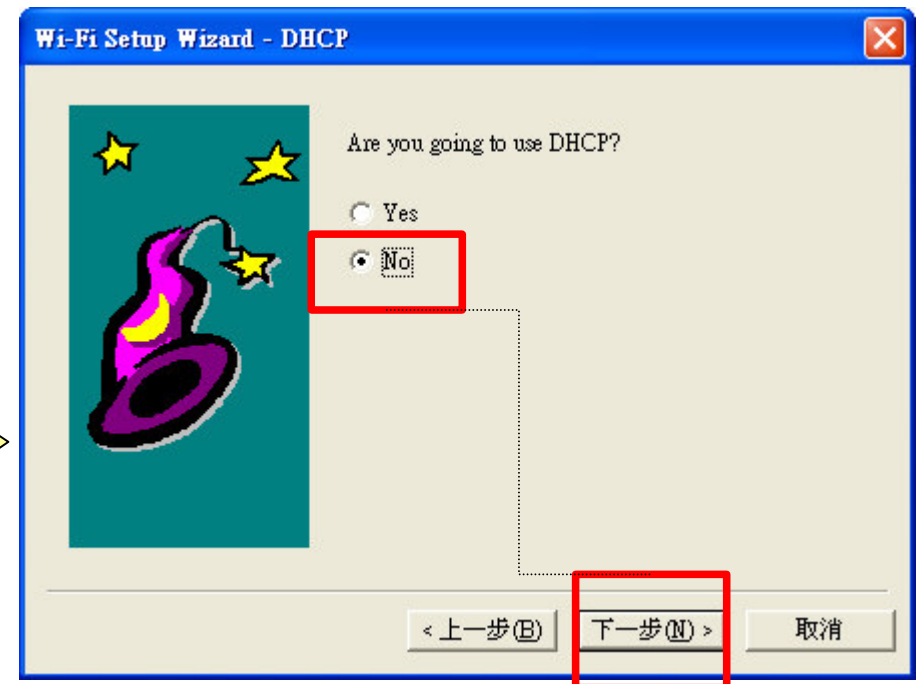
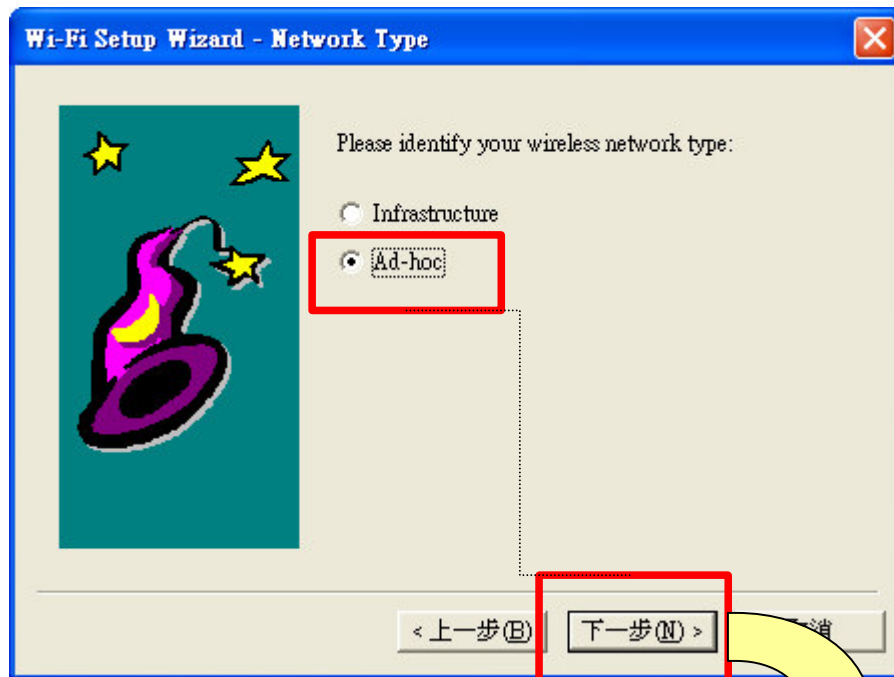


Note:

This SSID should be as the same as what you will setup in your PC or laptop.

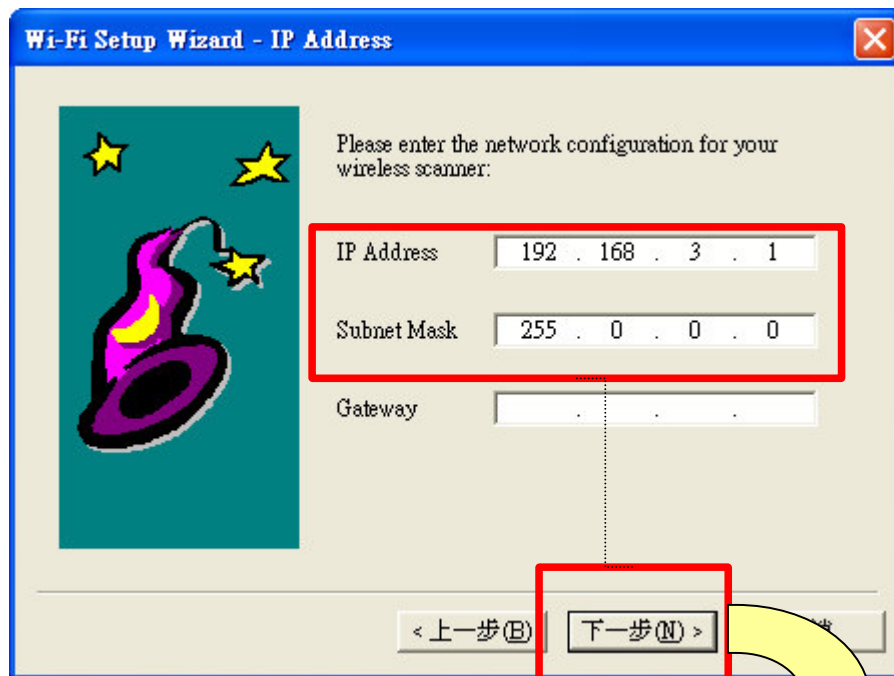
4. Network Type & DHCP setting:

- Please choose 'Ad-hoc' for point-to-point network connection, then click Next.
- Choose 'No' for not using DHCP, then click Next.



5. IP Address, Subnet Mask & WEP encryption:

- Enter the IP address of your scanner, ex. 192.168.3.1.
- Enter the Subnet Mask of network section, ex. 255.0.0.0, then click Next.
- Choose 'No' for not using WEP encryption, then click Next.



Wi-Fi Setup Wizard - IP Address

Please enter the network configuration for your wireless scanner:

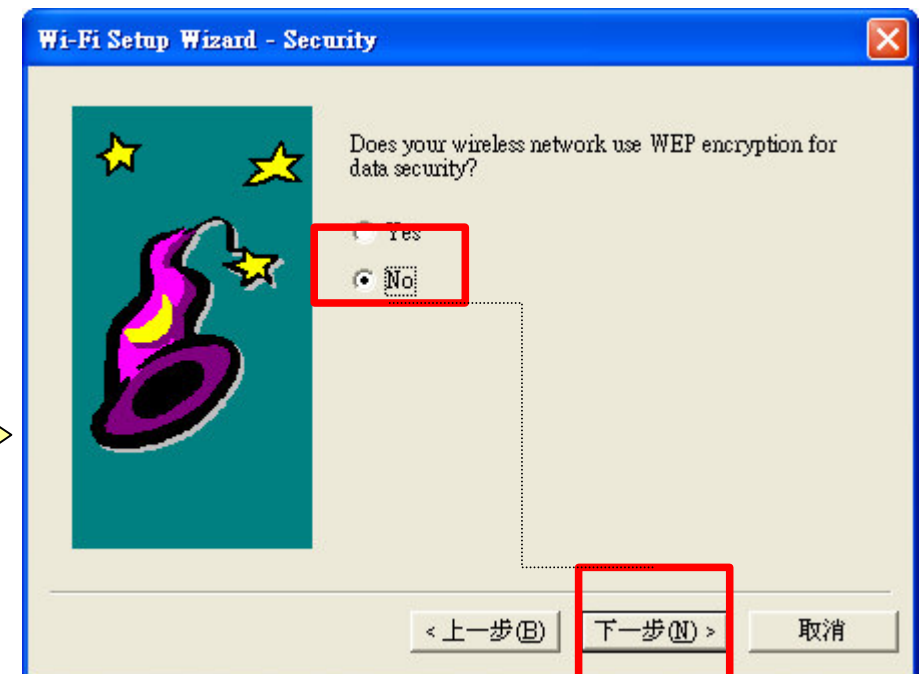
IP Address: 192 . 168 . 3 . 1

Subnet Mask: 255 . 0 . 0 . 0

Gateway: . . .

< 上一步(B) 下一步(N) >

The dialog box features a blue title bar and a light beige background. On the left, there is a decorative graphic of a purple and yellow swirl with three yellow stars. The main area contains three text input fields. The first two fields, 'IP Address' and 'Subnet Mask', are highlighted with a red rectangular box. Below them is a 'Gateway' field. At the bottom, there are three buttons: a disabled '< 上一步(B)', an active '下一步(N) >' (highlighted with a red box), and a disabled '取消' button. A yellow arrow points from the '下一步(N) >' button to the next dialog box.



Wi-Fi Setup Wizard - Security

Does your wireless network use WEP encryption for data security?

Yes

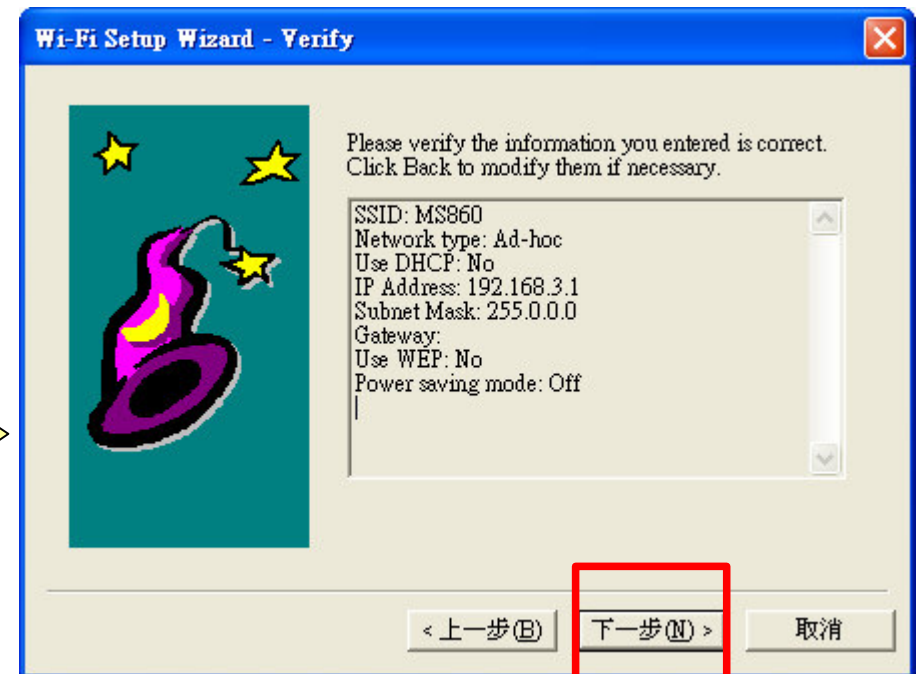
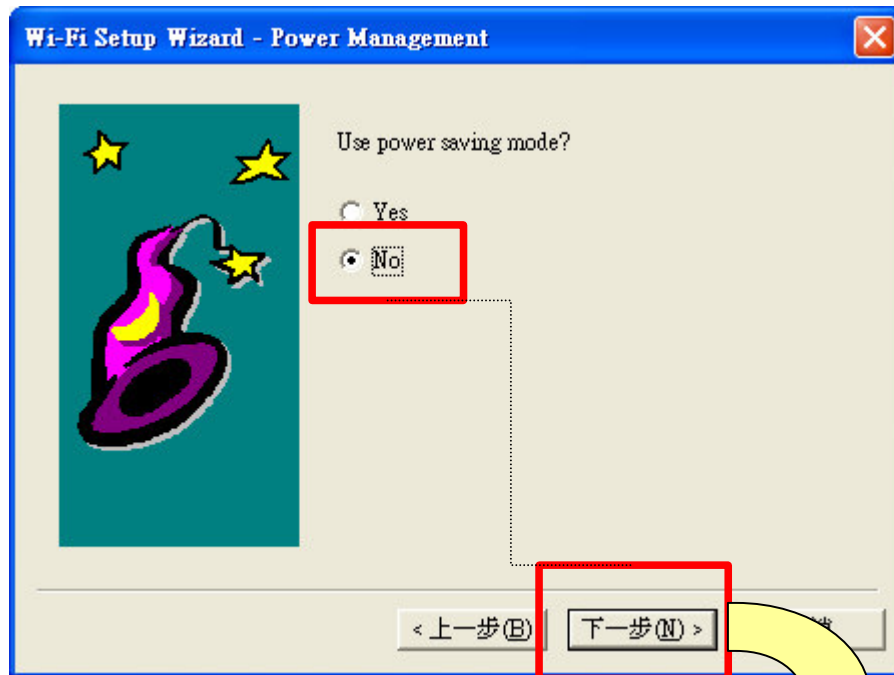
No

< 上一步(B) 下一步(N) > 取消

The dialog box has a blue title bar and a light beige background. On the left, it features the same decorative graphic as the previous dialog. The main area contains a question and two radio button options. The 'No' option is selected and highlighted with a red rectangular box. At the bottom, there are three buttons: a disabled '< 上一步(B)', an active '下一步(N) >' (highlighted with a red box), and a disabled '取消' button.

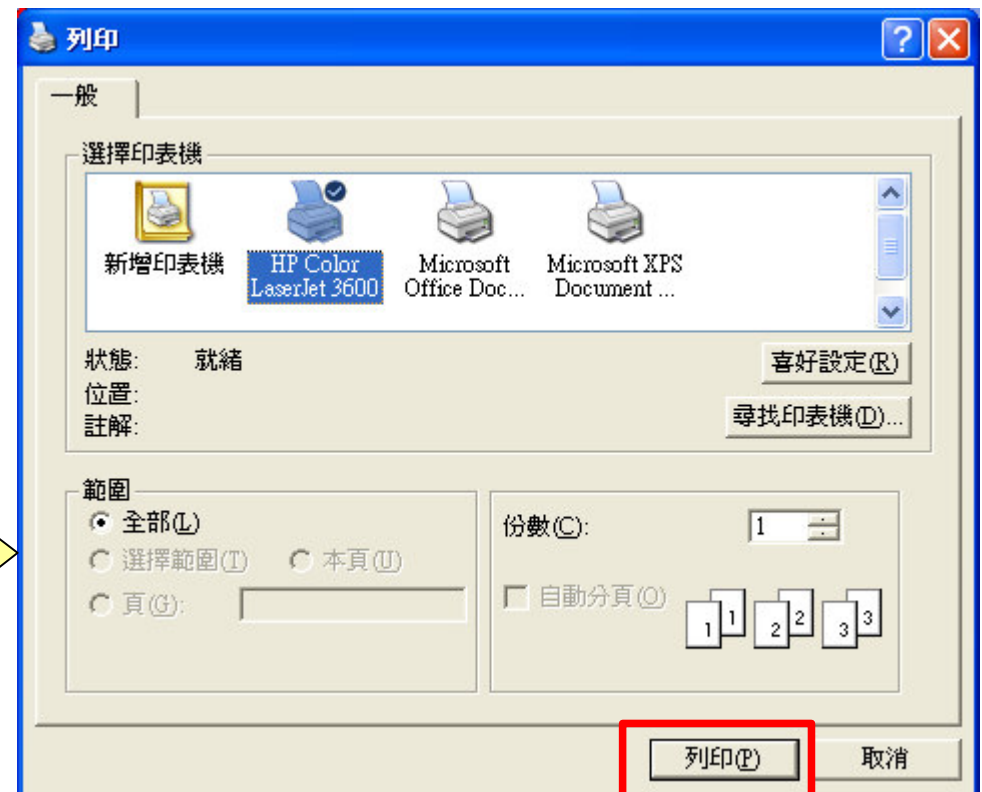
6. Power Saving mode:

- Choose 'No' for not using Power Saving mode, then click Next.



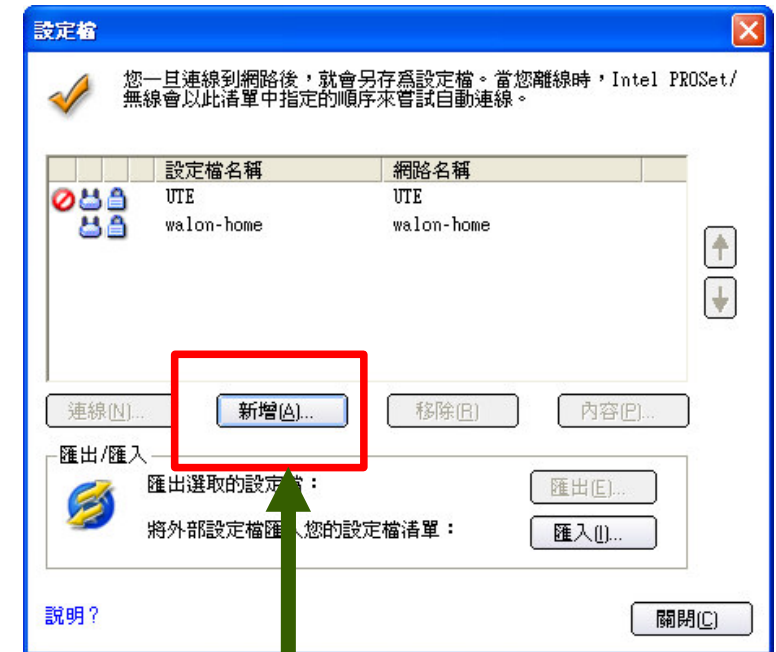
6. Setup complete & Print out barcode for scanner:

- WiFi setup completed. Please click 'Finish' for next step.
- After click 'Finish', it will show up 'Printing screen'. Choose your favorite printer for barcode printing.

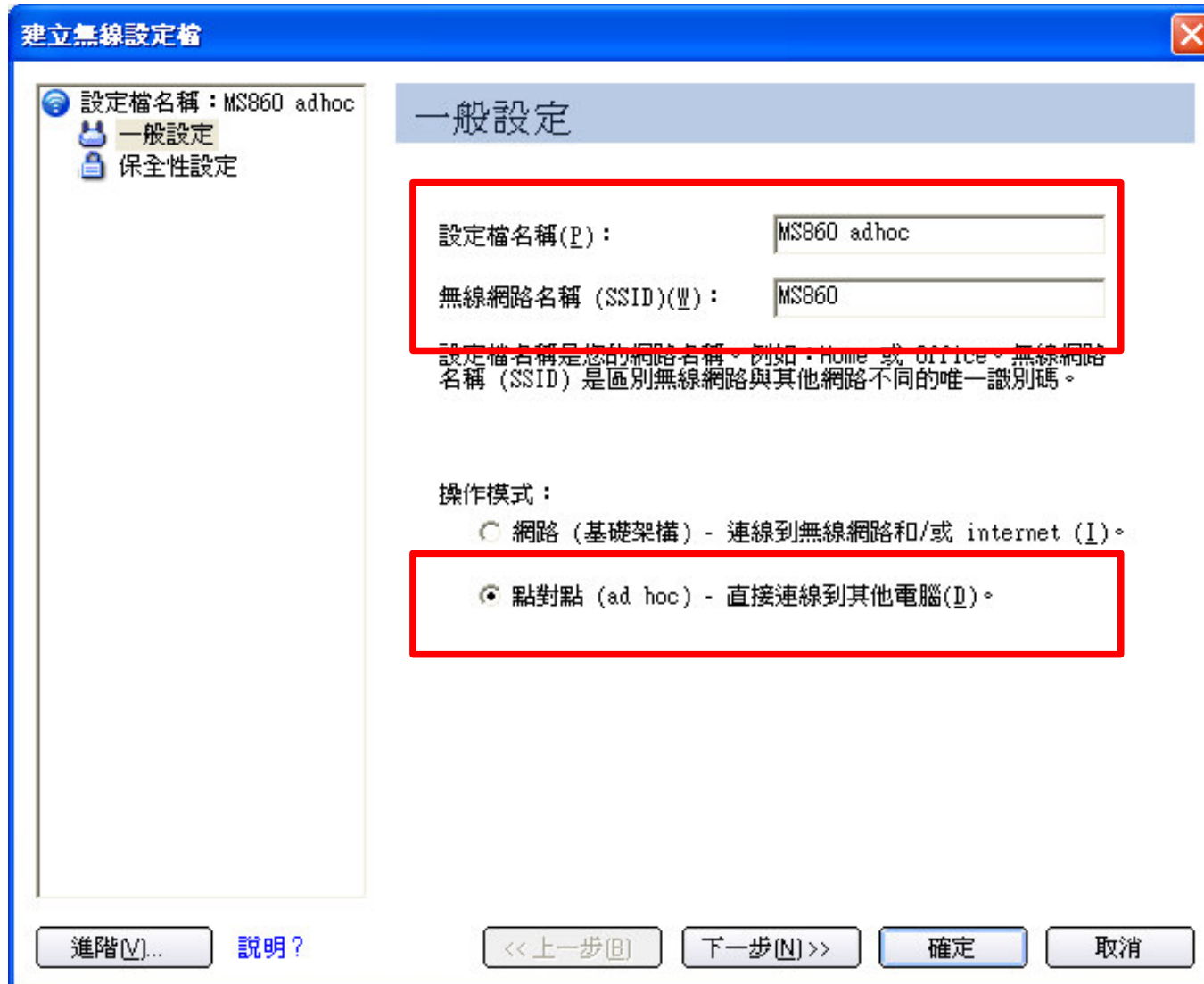


E. Ad-hoc Network setup on PC/Notebook

1. Enter your Wireless setup program, ex. Intel PROSet Wireless.
2. Click '設定檔(setting)' to setup a new connection.
3. Click '新增(New)' to create a new setting.



4. Enter a name for this new setting, ex. MS860 adhoc
5. Enter the name of SSID as what you set up in SCM, ex. MS860
6. Choose 'ad hoc' as its operation mode. Then click 'Next'.



建立無線設定檔

設定檔名稱: MS860 adhoc

一般設定

安全性設定

一般設定

設定檔名稱(P): MS860 adhoc

無線網路名稱 (SSID)(W): MS860

設定檔名稱是您的網路名稱。例如: Home 或 Office。無線網路名稱 (SSID) 是區別無線網路與其他網路不同的唯一識別碼。

操作模式:

網路 (基礎架構) - 連線到無線網路和/或 internet (I)。

點對點 (ad hoc) - 直接連線到其他電腦(I)。

進階(N)... 說明?

<< 上一步(B) 下一步(N) >> 確定 取消

7. For security setting, please click 'OK' without any setting.



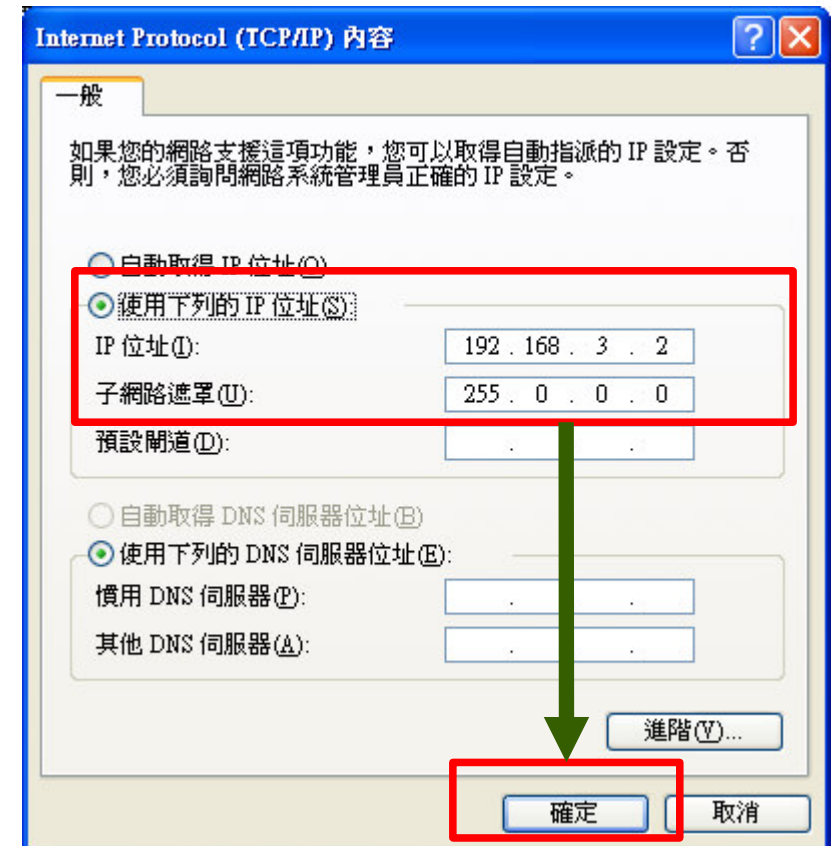
8. Then you can see a new network setting, please click 'Connect' and 'Close' this window.

9. Then you can see you've connected to MS860 adhoc network, but the IP address hasn't assigned.



10. To assign IP address for your PC/Notebook, please enter wireless network setting in control panel.

11. Double click 'Internet Protocol (TCP/IP)' as below picture, you can assign fix IP address for your PC/notebook. For example, 192.168.3.2, subnet mask=255.0.0.0.



Please assign IP address in the same network section with your scanner

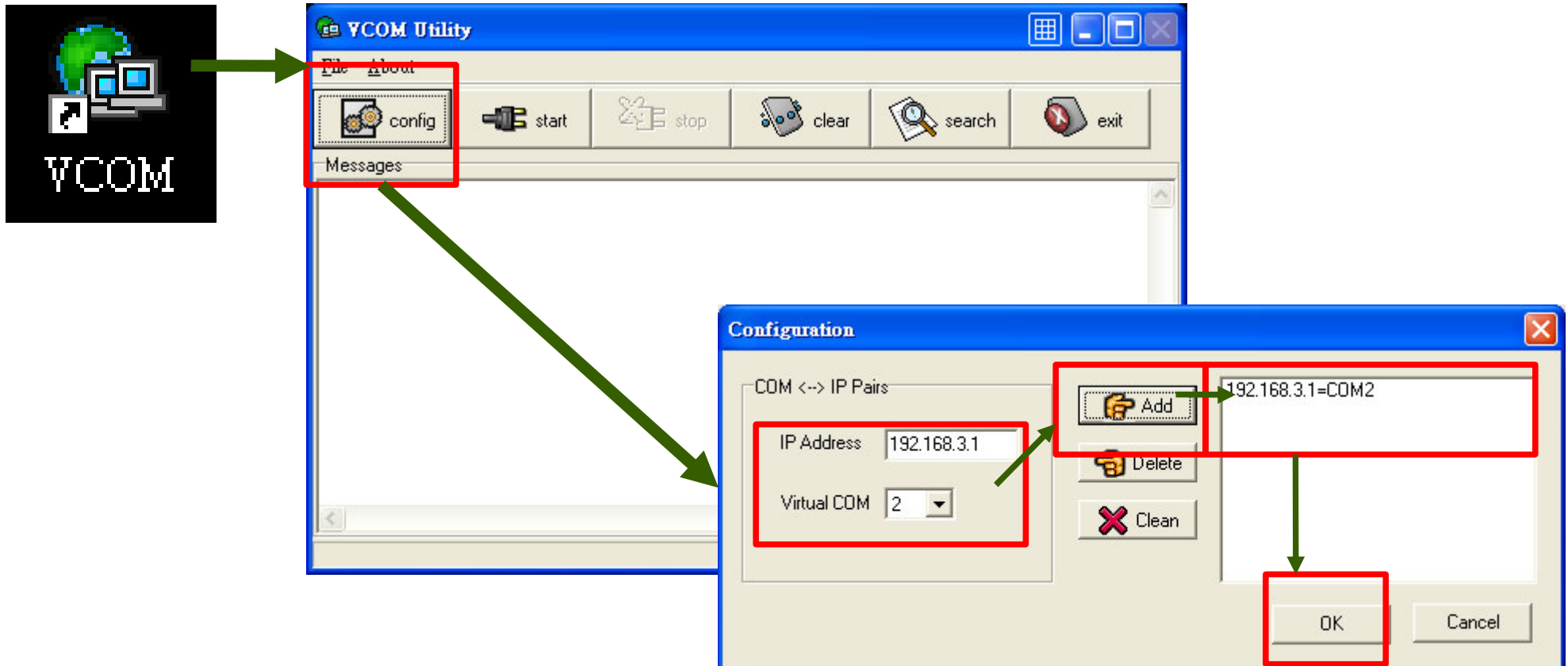
12. In 'Intel PROSet', choose 'MS860 adhoc' then click 'connect'. You'll find this connection has been connected with correct IP address.



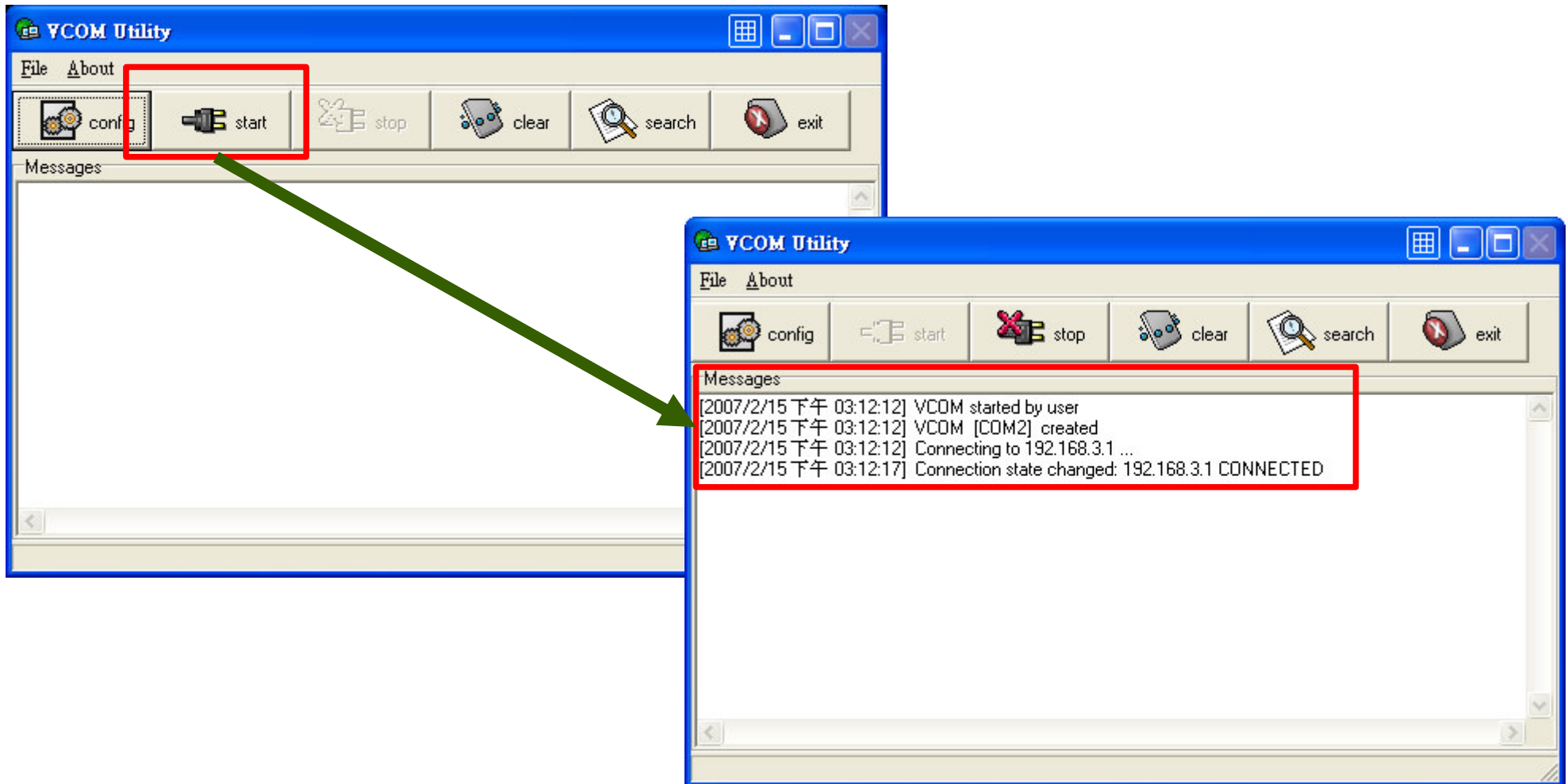
F. VCOM setting

This program

1. Click 'VCOM' to entering VCOM program.
2. Click 'config' to assign a COM port to IP address, ex. 192.168.3.1
3. Enter the IP address of scanner and choose a virtual COM port number that doesn't conflict with your PC/Notebook system, ex. COM2.
4. Click 'Add' and 'OK' to complete and add a new virtual COM port.

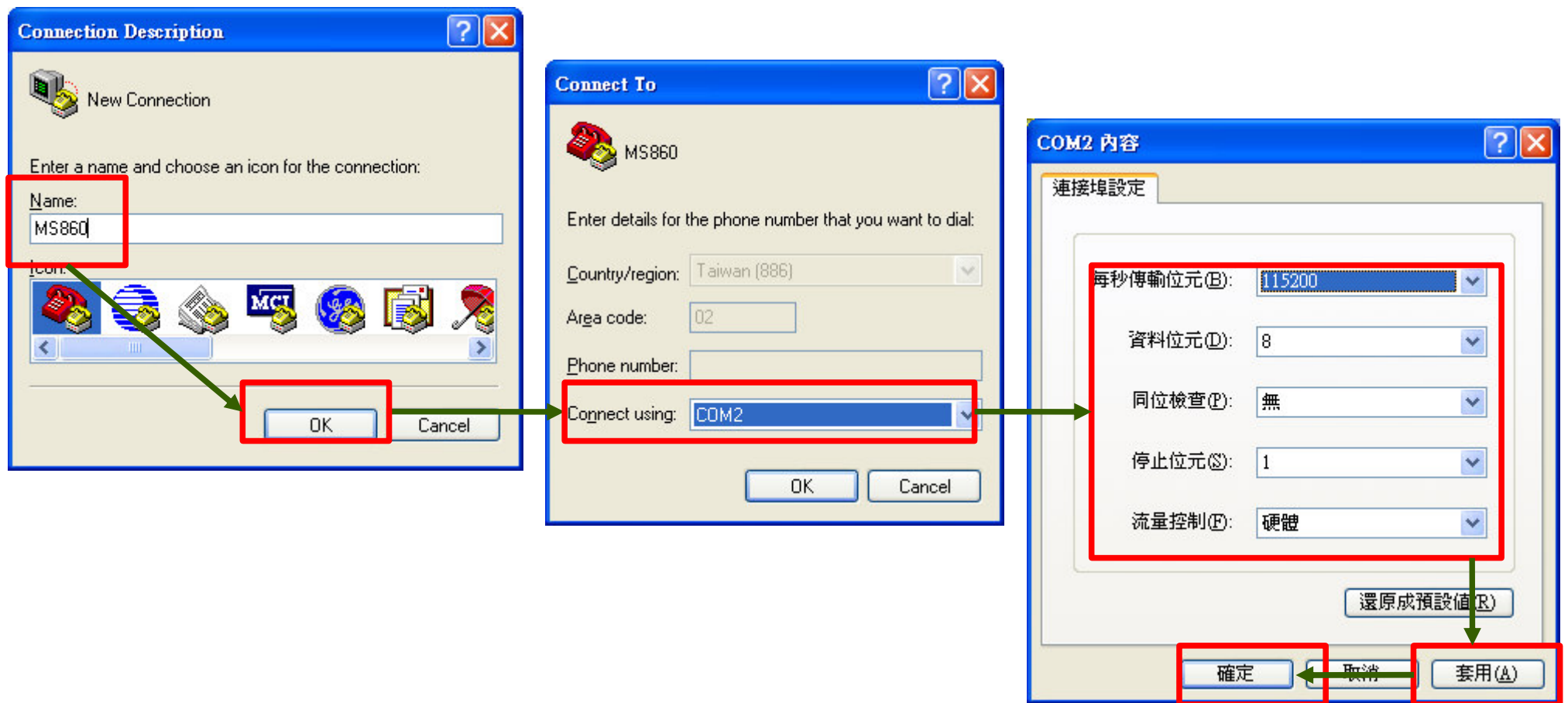


5. Return to VCOM main screen, then click 'start' to connect to virtual port and assigned IP address.
6. If the IP address can be found and the COM port doesn't conflict with your system. Then you'll see message 'CONNECTED'.
7. If you can't see 'CONNECTED', please check the setting again.

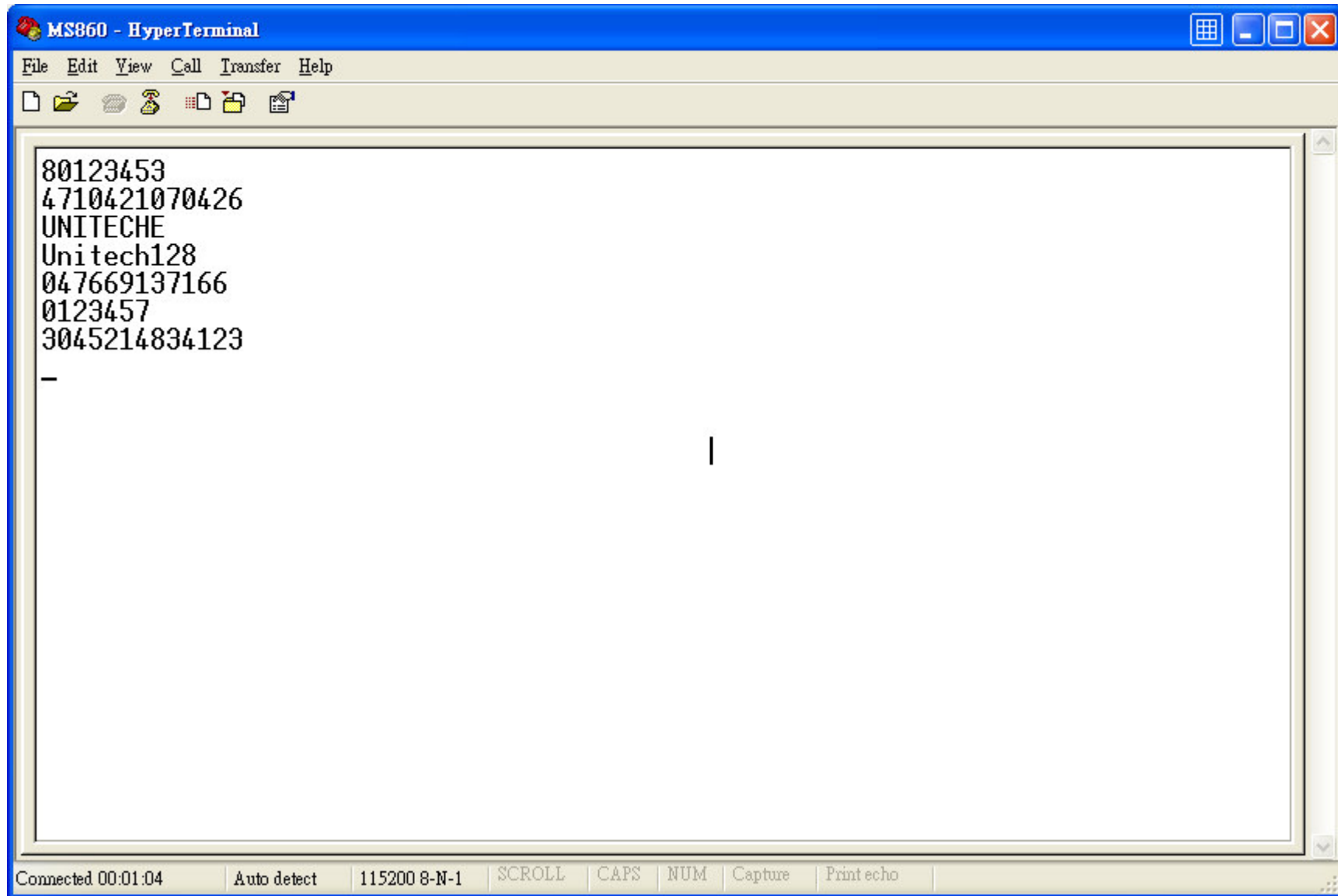


G. HyperTerminal

1. Choose 'HyperTerminal' in Programs. Enter a name for this connection.
2. For this connection, please choose 'COM2' as its connect method.
3. Choose the parameter of this serial port for connection as below picture.
For example, 115200,8,n,1,hardware.



4. Scan barcode for testing, then you'll see the barcode that you scanned shows on the screen as below picture.



The End !