

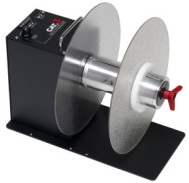
LABELMATE USA

Label Handling Innovations

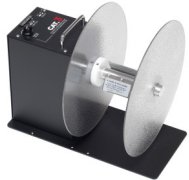
“CAT-3”

Heavy-Duty Label Rewinders

LABELMATE USA's **Constant Adjustable Torque™** ("CAT") technology has made the silent, easy-to-use "CAT-3" the "Industry Standard" Label Rewinder.



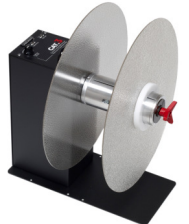
The top of the line **CAT-3-CHUCK** includes LABELMATE USA's durable "**Quick-Chuck™**" quick-locking Core Chuck, permitting the fastest loading and unloading of cores and label rolls. The **CAT-3-CHUCK** is ideal for high-volume production environments, label slitting applications, or anywhere the ultimate convenience in Rewinders is desired. A **CAT-3-CHUCK** model is available for 1.5" (38-mm), 40-mm, 70-mm, 3" (76-mm) or 4" (102-mm) cores, and 6" (152-mm), 8.6" (218-mm) and 10" (254-mm) material widths. The Outer Flange included with the 3" width "**Quick-Chucks**" guides the outer edge of the label web being rewound. Torque and Direction are fully controllable from the Control Panel.



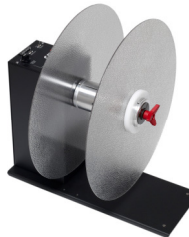
The **CAT-3-STANDARD** model has a Fin-Style Core Holder. It handles labels up to 6" (152-mm) wide and will wind a roll of labels up to a 12" (305-mm) in diameter. A 10" (254-mm) wide Fin-Style CAT-3 is also available. Torque and Direction are fully controllable from the Control Panel.



The **CAT-3-ACH** model includes an Adjustable Core Holder that accepts any core size from 1" (25-mm) to 4" (102-mm) in diameter, and up to 6" (152-mm) in width. The optional Adjustable Paper Guide, **APG-CAT**, is a movable arm that can be installed in minutes on the base of the **CAT-3-ACH**. This inexpensive accessory guides the outer edge of the label roll as it's being rewound to ensure even roll alignment. Torque and Direction are fully controllable from the Control Panel.



The **CAT-3-R16-CHUCK** allows you to rewind label rolls up to 16" (40-cm) in diameter. A **CAT-3-R16-CHUCK** model is available for 1.5" (38-mm), 40-mm, 70-mm, 3" (76-mm) or 4" (102-mm) cores, and 6" (152-mm), 8.6" (218-mm) and 10" (254-mm) material widths. The Outer Flange included with the 3" width "**Quick-Chucks**" guides the outer edge of the label web being rewound. Torque and Direction are fully controllable from the Control Panel.



The **CAT-3-R18-CHUCK** is equipped with a reinforced Base Plate, and can rewind label rolls up to 18-inches (46-cm) in diameter and weighing up to 50 lbs. A **CAT-3-R18-CHUCK** model is available for 1.5" (38-mm), 40-mm, 70-mm, 3" (76-mm) or 4" (102-mm) cores, and 6" (152-mm), 8.6" (218-mm) and 10" (254-mm) material widths. The Outer Flange included with the 3" width "**Quick-Chucks**" guides the outer edge of the label web being rewound. Torque and Direction are fully controllable from the Control Panel.

LABELMATE USA's Heavy-Duty "CAT" Rewinders are designed for continuous operation. Rugged, heavy-gauge steel construction allows the **CAT-3** Rewinder to be simply set in place and run in perpetuity. Special anti-slip feet keep the unit from moving. The **CAT-3** handles any rewind job, and with its "HIGH" torque range can also power LABELMATE USA **S-100** or **S-200** Label Slitters. Reliable, high quality and maintenance-free, **CAT-3** Label Rewinders feature an industry best **5-Year Parts and Labor Limited Warranty**.

Put LABELMATE USA **CAT-3** Label Rewinders to work for you today and enjoy a new dimension in label rewinding convenience, control and reliability. Custom colors, badging, and special core holders are available for private label applications.

CORE DIA.	LABEL WIDTH	ROLL DIA.	DESCRIPTION	MODEL	ADD SUFFIX	
None	Up to 6" (152-mm)	Up to 12" (305-mm)	Coreless Rewind Shaft with two label Flanges and rewind Bail.	CAT-3	-CORELESS	
1"			1" Diameter Fin-Style Rewind Shaft with two label Flanges.		-1-INCH	
1" to 4"		Up to 11" (280-mm)	1" to 4" Adjustable Core Holder.		-ACH	
3"		Up to 12" (305-mm)	6" wide Fin-Style Core Holder with two label Flanges.		-STANDARD	
			6" wide "Quick-Chuck" with two label Flanges.		-CHUCK	
		Up to 8.6" (220-mm)	8.6" wide "Quick-Chuck" with two label Flanges.		-CHUCK-220	
		Up to 10" (254-mm)	Up to 12" (305-mm)		10" wide Fin-Style Core Holder with two label Flanges.	-W10
					10" wide "Quick-Chuck" with two label Flanges.	-CHUCK-10

CORE DIA.	LABEL WIDTH	ROLL DIA.	DESCRIPTION	MODEL	ADD SUFFIX
3"	Up to 6" (152-mm)	Up to 16" (400-mm)	6" wide "Quick-Chuck" with two label Flanges. Includes the High-Torque Option.	CAT-3	-R16-CHUCK
	Up to 8.6" (220-mm)		8.6" wide "Quick-Chuck" with two label Flanges. Includes the High-Torque Option.		-R16-CHUCK-220
	Up to 10" (254-mm)		10" wide "Quick-Chuck" with two label Flanges. Includes the High-Torque Option.		R16-CHUCK-10
	Up to 6" (152-mm)	Up to 18" (457-mm)	6" wide "Quick-Chuck" with two label Flanges. Includes the High-Torque Option.		-R18-CHUCK
	Up to 8.6" (220-mm)		8.6" wide "Quick-Chuck" with two label Flanges. Includes the High-Torque Option.		-R18-CHUCK-220
	Up to 10" (254-mm)		10" wide "Quick-Chuck" with two label Flanges. Includes the High-Torque Option.		-R18-CHUCK-10

MODEL	ROLL DIAMETER	MAXIMUM ROLL WEIGHT	SPEED	SIZE OVERALL (HxWxD) (SINGLE UNIT)
CAT-3	Up to 12" (305-mm)	32-lbs. (14.5 Kg)	Up to 49"/sec. (125-cm)	12.75"x12"x15" (324 x 305 x 381-mm)
CAT-3-R16	Up to 16" (400-mm)	32-lbs. (14.5 Kg)	Up to 49"/sec. (125-cm)	19.25" x 16" x 17" (489 x 406 x 432-mm)
CAT-3-R18	Up to 18" (457-mm)	50-lbs. (22.7 Kg)	Up to 49"/sec. (125-cm)	20.25" x 18" x 19.25" (514 x 457 x 489-mm)

- All models are bi-directional.
- "TORQUE ADJUST" - Continuously adjustable torque control.
- "TORQUE RANGE SWITCH" - NORMAL (REWIND), HIGH (SLIT)
- "EXTERNAL HALT CONTROL" - External control removes power to the motor and applies braking. Use is optional and not required.
- **WEIGHT:** CAT-3, approximately 28-33 lbs. CAT-3-R16, approximately 30-35 lbs. CAT-3-R18, approximately 37-42 lbs.
- **POWER REQUIREMENTS:** 120-vac 60Hz 50 va max. UL/CSA Listed Power Supply. 220-240vac 50Hz also available.
- **WARRANTY:** 5-Year Parts and Labor Limited Warranty, the longest in the industry. (One-Year Limited Warranty on included Power Supply Module.)